

**Fiscal and Economic Data  
Table of Contents**

Explanation of Design of Tables and Figures ..... A-5

Table 1. Population Growth Fifty State Rankings, 1992 to 2002 ..... A-6

Figure 1. Oklahoma Population as a Percent of United States, 1970-2002 ..... A-7

Table 2. Oklahoma Population as a Percent of United States, 1970-2002 ..... A-7

Table 3. State Per Capita Personal Income as a Percent of United States  
Fifty State Ranking, 1991 and 2001 ..... A-8

Figure 2. Oklahoma Per Capita Personal Income as a Percent of United States, 1958-2001... A-9

Table 4. Oklahoma Per Capita Personal Income as a Percent of United States, 1958-2001 .... A-9

Figure 3. Per Capita Personal Income Gap, United States and Oklahoma, 1958-2001 ..... A-10

Table 5. Per Capita Personal Income Gap, United States and Oklahoma, 1958-2001..... A-10

Table 6. State Median Household Income as a Percent of United States  
Fifty State Ranking, Three Year Average Median 1999-2001 ..... A-11

Table 7. State Average Earnings per Job as a Percent of United States  
Fifty State Rankings, 1991 and 2001 ..... A-12

Figure 4. Oklahoma Average Earnings per Job as a Percent of United States, 1969-2001.... A-13

Table 8. Oklahoma Average Earnings per Job as a Percent of United States, 1969-2001 ..... A-13

Table 9. Unemployment Rate Fifty State Rankings, 2001-2002 ..... A-14

Figure 5. Oklahoma and United States Unemployment Rates, 1978-2002 ..... A-15

Table 10. Oklahoma and United States Unemployment Rates, 1978-2002 ..... A-15

Table 11. Elementary and Secondary Education Expenditures Per Pupil  
Fifty State Ranking, FY-2000 ..... A-16

Figure 6. Oklahoma Elementary and Secondary Education Expenditures Per Pupil  
as a Percent of United States, FY-86 to FY-2000 ..... A-17

Table 12. Oklahoma Elementary and Secondary Education Expenditures Per Pupil  
as a Percent of United States, FY-86 to FY-2000 ..... A-17

### **Explanation of Design of Tables and Figures**

The tables and figures in this section are intended to provide the reader with a broad array of information about the Oklahoma economy and its government. This information is presented in two different, but complementary formats.

The first of these formats is the ranking of all fifty states in the various measures presented. This comparison helps the reader understand where Oklahoma ranks nationally, and how we compare to other states. The second format is a comparison of Oklahoma to the United States over a history of varying length depending upon the data series. This comparison shows how our state has been performing compared to the nation as a whole over time.

By combining these two views of comparing Oklahoma against some benchmark, we get a great deal more information than if we look at either view separately. For example, knowing that Oklahoma ranks 40<sup>th</sup> on some measure may seem to be bad news, but if our standing compared to the United States has improved over time, this is less concerning. Conversely, Oklahoma ranking 10<sup>th</sup> in some comparison may not be strictly good news if our trend compared to the nation as a whole has been declining.

In order to maximize the value of these two comparisons of Oklahoma's performance on the various measures included here, a general format is followed. First, the fifty state ranking is presented followed by the comparison of Oklahoma and the United States over time. The former comparison is depicted in a table and Oklahoma will be highlighted to aid readers. The latter comparison is depicted with a line graph and also includes a table so that the underlying information is available to anyone interested.

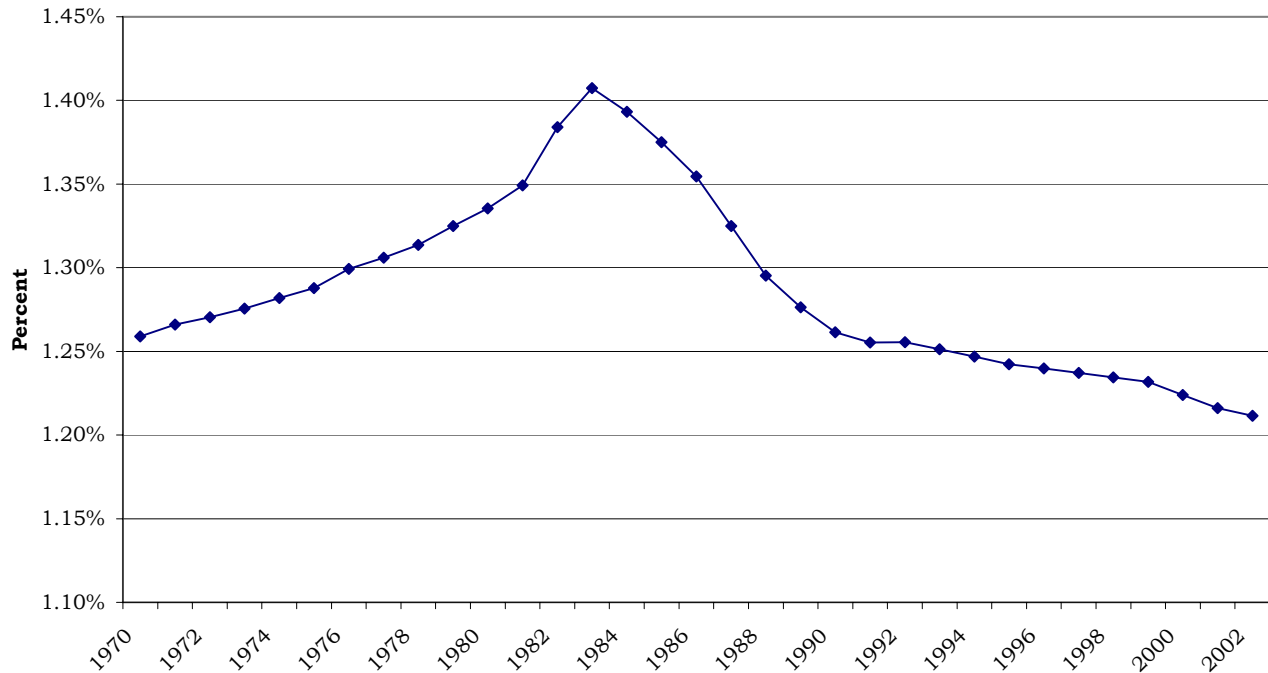
The measures presented in the following tables include population, per capita personal income, average earnings, median household income, unemployment rate, and per pupil education spending. Median household income is a relatively good means of comparing states at a point in time, but is not appropriate as a time series so the historical comparison of Oklahoma to the United States is omitted. All of the remaining comparisons are presented in the format described above.

**Table 1. Population Growth Fifty State Rankings, 1992 to 2002**

<b>Rank</b>	<b>State</b>	<b>1992 Population</b>	<b>2002 Population</b>	<b>Population Growth 1992 to 2002</b>
1	Nevada	1,351,367	2,173,491	60.84%
2	Arizona	3,915,740	5,456,453	39.35%
3	Colorado	3,495,939	4,506,542	28.91%
4	Utah	1,836,799	2,316,256	26.10%
5	Georgia	6,817,203	8,560,310	25.57%
6	Idaho	1,071,685	1,341,131	25.14%
7	Texas	17,759,738	21,779,893	22.64%
8	Florida	13,650,553	16,713,149	22.44%
9	North Carolina	6,897,214	8,320,146	20.63%
10	Oregon	2,991,755	3,521,515	17.71%
11	Washington	5,160,757	6,068,996	17.60%
12	New Mexico	1,595,442	1,855,059	16.27%
13	Delaware	694,925	807,385	16.18%
14	Tennessee	5,049,742	5,797,289	14.80%
15	New Hampshire	1,117,784	1,275,056	14.07%
16	Virginia	6,414,307	7,293,542	13.71%
17	South Carolina	3,620,464	4,107,183	13.44%
18	California	30,974,659	35,116,033	13.37%
19	Arkansas	2,415,984	2,710,079	12.17%
20	Minnesota	4,495,572	5,019,720	11.66%
21	Maryland	4,923,368	5,458,137	10.86%
22	Montana	825,770	909,453	10.13%
23	Mississippi	2,623,734	2,871,782	9.45%
24	Alaska	588,736	643,786	9.35%
25	New Jersey	7,880,508	8,590,300	9.01%
26	Missouri	5,217,101	5,672,579	8.73%
27	Kentucky	3,765,469	4,092,891	8.70%
28	Indiana	5,674,547	6,159,068	8.54%
29	Oklahoma	3,220,517	3,493,714	8.48%
30	Wisconsin	5,025,398	5,441,196	8.27%
31	Alabama	4,154,014	4,486,508	8.00%
32	Illinois	11,694,184	12,600,620	7.75%
33	Vermont	572,751	616,592	7.65%
34	Hawaii	1,158,613	1,244,898	7.45%
35	Nebraska	1,611,687	1,729,180	7.29%
36	Kansas	2,532,394	2,715,884	7.25%
37	Wyoming	466,251	498,703	6.96%
38	South Dakota	712,801	761,063	6.77%
39	Massachusetts	6,028,709	6,427,801	6.62%
40	Michigan	9,479,065	10,050,446	6.03%
41	Rhode Island	1,012,581	1,069,725	5.64%
42	New York	18,246,653	19,157,532	4.99%
43	Connecticut	3,300,712	3,460,503	4.84%
44	Maine	1,238,508	1,294,464	4.52%
45	Louisiana	4,293,003	4,482,646	4.42%
46	Iowa	2,818,401	2,936,760	4.20%
47	Ohio	11,029,431	11,421,267	3.55%
48	Pennsylvania	12,049,450	12,335,091	2.37%
49	West Virginia	1,806,451	1,801,873	-0.25%
50	North Dakota	638,223	634,110	-0.64%
	United States	256,514,224	288,368,698	12.42%

Source: United States Census Bureau

**Figure 1. Oklahoma Population as a Percent of United States, 1970-2002**



**Table 2. Oklahoma Population as a Percent of United States, 1970-2002**

Year	Oklahoma Population	United States Population	Oklahoma as a Percent of United States	Year	Oklahoma Population	United States Population	Oklahoma as a Percent of United States
1970	2,559,463	203,302,031	1.26%	1987	3,210,122	242,288,918	1.32%
1971	2,618,601	206,827,026	1.27%	1988	3,167,057	244,498,982	1.30%
1972	2,658,646	209,283,905	1.27%	1989	3,150,307	246,819,230	1.28%
1973	2,695,931	211,357,481	1.28%	1990	3,148,825	249,622,814	1.26%
1974	2,734,768	213,341,554	1.28%	1991	3,175,440	252,980,941	1.26%
1975	2,774,683	215,465,255	1.29%	1992	3,220,517	256,514,224	1.26%
1976	2,826,815	217,562,735	1.30%	1993	3,252,285	259,918,588	1.25%
1977	2,870,014	219,759,869	1.31%	1994	3,280,940	263,125,821	1.25%
1978	2,917,336	222,095,080	1.31%	1995	3,308,208	266,278,393	1.24%
1979	2,975,310	224,567,241	1.32%	1996	3,340,129	269,394,284	1.24%
1980	3,025,290	226,545,805	1.34%	1997	3,372,917	272,646,925	1.24%
1981	3,096,164	229,465,714	1.35%	1998	3,405,194	275,854,104	1.23%
1982	3,206,123	231,664,458	1.38%	1999	3,437,147	279,040,168	1.23%
1983	3,290,402	233,791,994	1.41%	2000	3,454,408	282,224,348	1.22%
1984	3,285,533	235,824,902	1.39%	2001	3,469,577	285,317,559	1.22%
1985	3,271,332	237,923,795	1.37%	2002	3,493,714	288,368,698	1.21%
1986	3,252,735	240,132,887	1.35%				

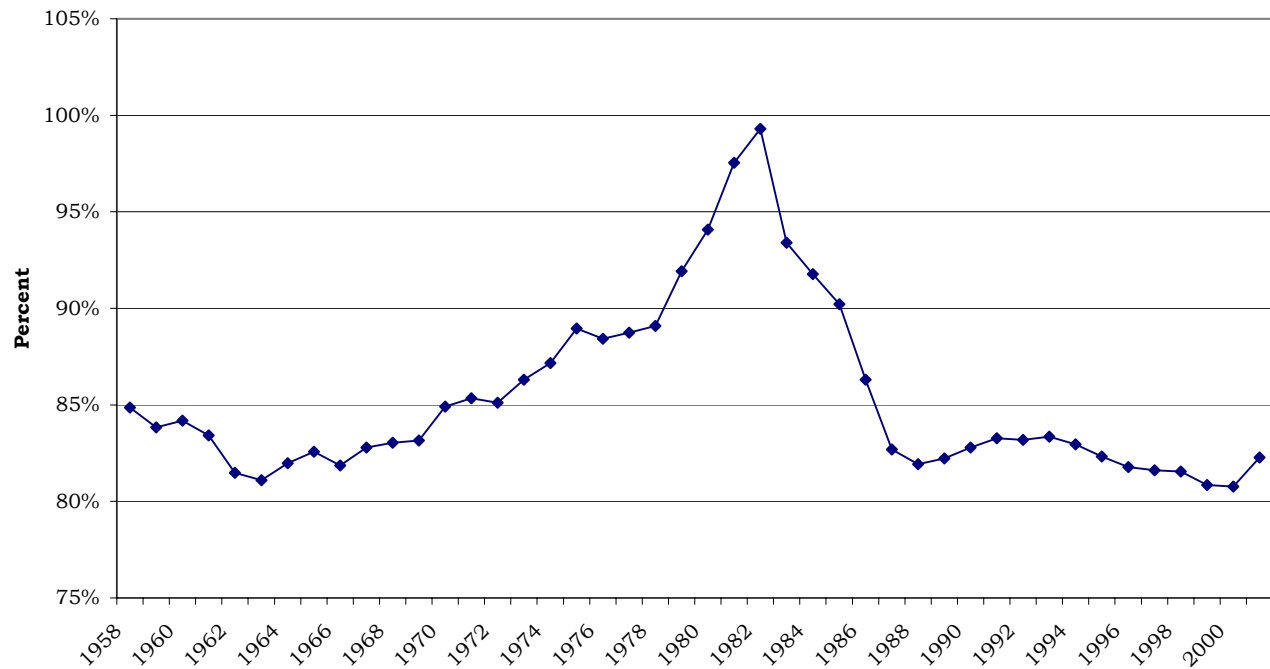
Source: United States Census Bureau

**Table 3. State Per Capita Personal Income as a Percent of United States Fifty State Rankings, 1991 and 2001**

Rank	State	1991 Per Capita Personal Income	1991 Per Capita Personal Income as a Percent of United States	Rank	State	2001 Per Capita Personal Income	2001 Per Capita Personal Income as a Percent of United States
1	Connecticut	\$26,747	133.58%	1	Connecticut	\$42,435	139.26%
2	New Jersey	25,055	125.13%	2	Massachusetts	38,907	127.68%
3	New York	23,820	118.96%	3	New Jersey	38,509	126.38%
4	Massachusetts	23,671	118.22%	4	New York	36,019	118.20%
5	Maryland	23,516	117.44%	5	Maryland	35,188	115.48%
6	Alaska	23,226	116.00%	6	New Hampshire	34,138	112.03%
7	Hawaii	23,046	115.10%	7	Colorado	33,470	109.84%
8	Delaware	22,257	111.16%	8	Minnesota	33,101	108.63%
9	California	21,983	109.79%	9	Illinois	33,023	108.37%
10	New Hampshire	21,270	106.23%	10	California	32,702	107.32%
11	Illinois	21,260	106.18%	11	Delaware	32,472	106.56%
12	Nevada	21,100	105.38%	12	Virginia	32,431	106.43%
13	Virginia	21,033	105.04%	13	Washington	32,025	105.10%
14	Washington	20,850	104.13%	14	Alaska	30,936	101.52%
15	Pennsylvania	20,438	102.07%	15	Pennsylvania	30,720	100.81%
16	Minnesota	20,427	102.02%	16	Rhode Island	30,215	99.16%
17	Colorado	20,369	101.73%	17	Nevada	29,897	98.11%
18	Rhode Island	20,228	101.02%	18	Michigan	29,788	97.76%
19	Florida	20,068	100.22%	19	Wyoming	29,416	96.53%
20	Michigan	19,307	96.42%	20	Wisconsin	29,270	96.06%
21	Ohio	19,196	95.87%	21	Hawaii	29,002	95.18%
22	Kansas	18,806	93.92%	22	Florida	28,947	95.00%
23	Wyoming	18,805	93.92%	23	Nebraska	28,886	94.80%
24	Oregon	18,744	93.61%	24	Ohio	28,816	94.57%
25	Nebraska	18,706	93.42%	25	Georgia	28,733	94.29%
26	Wisconsin	18,667	93.23%	26	Vermont	28,594	93.84%
27	Missouri	18,514	92.46%	27	Texas	28,581	93.79%
28	Georgia	18,201	90.90%	28	Kansas	28,565	93.74%
29	Vermont	18,171	90.75%	29	Missouri	28,226	92.63%
30	Texas	18,090	90.35%	30	Oregon	28,165	92.43%
31	Indiana	18,009	89.94%	31	Indiana	27,783	91.18%
32	Iowa	17,818	88.99%	32	North Carolina	27,514	90.29%
33	North Carolina	17,784	88.82%	33	Iowa	27,331	89.69%
34	Maine	17,638	88.09%	34	Tennessee	26,988	88.57%
35	Arizona	17,441	87.10%	35	Maine	26,723	87.70%
36	Tennessee	17,433	87.06%	36	South Dakota	26,664	87.50%
37	South Dakota	16,907	84.44%	37	North Dakota	25,902	85.00%
38	Oklahoma	16,674	83.27%	38	Arizona	25,872	84.90%
39	Alabama	16,503	82.42%	39	Oklahoma	25,071	82.28%
40	Montana	16,471	82.26%	40	Kentucky	24,923	81.79%
41	South Carolina	16,358	81.70%	41	South Carolina	24,886	81.67%
42	North Dakota	16,230	81.06%	42	Idaho	24,621	80.80%
43	Kentucky	16,207	80.94%	43	Alabama	24,589	80.69%
44	Idaho	16,158	80.70%	44	Louisiana	24,535	80.52%
45	Louisiana	16,030	80.06%	45	Utah	24,180	79.35%
46	New Mexico	15,661	78.22%	46	Montana	23,963	78.64%
47	Utah	15,592	77.87%	47	New Mexico	23,155	75.99%
48	West Virginia	15,214	75.98%	48	Arkansas	22,887	75.11%
49	Arkansas	15,175	75.79%	49	West Virginia	22,881	75.09%
50	Mississippi	13,766	68.75%	50	Mississippi	21,750	71.38%
	United States	\$20,023			United States	\$30,472	

Source: Bureau of Economic Analysis

**Figure 2. Oklahoma Per Capita Personal Income as a Percent of United States, 1958-2001**

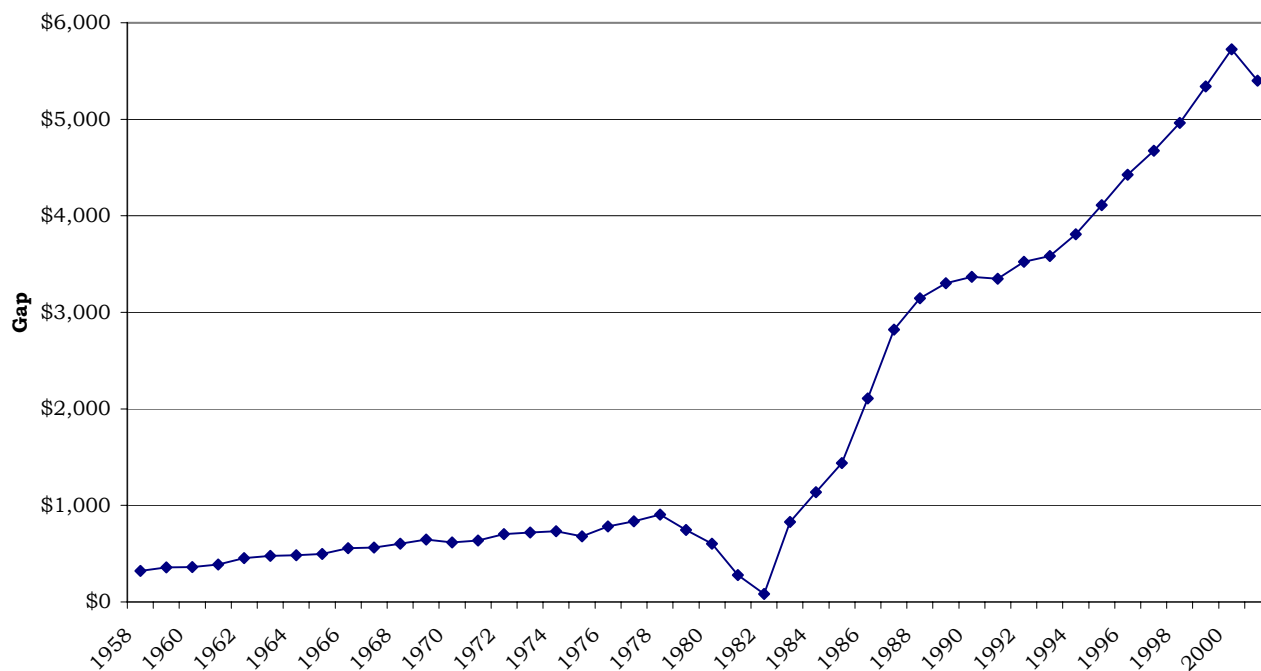


**Table 4. Oklahoma Per Capita Personal Income as a Percent of United States, 1958-2001**

Year	Oklahoma Per Capita Personal Income	United States Per Capita Personal Income	Oklahoma as a Percent of United States	Year	Oklahoma Per Capita Personal Income	United States Per Capita Personal Income	Oklahoma as a Percent of United States
1958	\$1,794	\$2,114	84.86%	1980	\$9,580	\$10,183	94.08%
1959	1,857	2,215	83.84%	1981	11,003	11,280	97.54%
1960	1,916	2,276	84.18%	1982	11,817	11,901	99.29%
1961	1,947	2,334	83.42%	1983	11,725	12,554	93.40%
1962	1,994	2,447	81.49%	1984	12,687	13,824	91.78%
1963	2,055	2,534	81.10%	1985	13,265	14,705	90.21%
1964	2,196	2,679	81.97%	1986	13,288	15,397	86.30%
1965	2,361	2,859	82.58%	1987	13,464	16,284	82.68%
1966	2,517	3,075	81.85%	1988	14,257	17,403	81.92%
1967	2,702	3,264	82.78%	1989	15,265	18,566	82.22%
1968	2,948	3,550	83.04%	1990	16,205	19,572	82.80%
1969	3,198	3,846	83.15%	1991	16,674	20,023	83.27%
1970	3,477	4,095	84.91%	1992	17,437	20,960	83.19%
1971	3,711	4,348	85.35%	1993	17,955	21,539	83.36%
1972	4,020	4,723	85.12%	1994	18,531	22,340	82.95%
1973	4,524	5,242	86.30%	1995	19,144	23,255	82.32%
1974	4,986	5,720	87.17%	1996	19,846	24,270	81.77%
1975	5,475	6,155	88.95%	1997	20,739	25,412	81.61%
1976	5,974	6,756	88.43%	1998	21,930	26,893	81.55%
1977	6,586	7,421	88.75%	1999	22,540	27,880	80.85%
1978	7,387	8,291	89.10%	2000	24,046	29,770	80.77%
1979	8,485	9,230	91.93%	2001	25,071	30,472	82.28%

Source: Bureau of Economic Analysis

**Figure 3. Per Capita Personal Income Gap, Oklahoma and United States, 1958-2001**



**Table 5. Per Capita Personal Income Gap, Oklahoma and United States, 1958-2001**

Year	Oklahoma Per Capita Personal Income	United States Per Capita Personal Income	Gap, United States - Oklahoma	Year	Oklahoma Per Capita Personal Income	United States Per Capita Personal Income	Gap, United States - Oklahoma
1958	\$1,794	\$2,114	\$320	1980	\$9,580	\$10,183	\$603
1959	1,857	2,215	358	1981	11,003	11,280	277
1960	1,916	2,276	360	1982	11,817	11,901	84
1961	1,947	2,334	387	1983	11,725	12,554	829
1962	1,994	2,447	453	1984	12,687	13,824	1,137
1963	2,055	2,534	479	1985	13,265	14,705	1,440
1964	2,196	2,679	483	1986	13,288	15,397	2,109
1965	2,361	2,859	498	1987	13,464	16,284	2,820
1966	2,517	3,075	558	1988	14,257	17,403	3,146
1967	2,702	3,264	562	1989	15,265	18,566	3,301
1968	2,948	3,550	602	1990	16,205	19,572	3,367
1969	3,198	3,846	648	1991	16,674	20,023	3,349
1970	3,477	4,095	618	1992	17,437	20,960	3,523
1971	3,711	4,348	637	1993	17,955	21,539	3,584
1972	4,020	4,723	703	1994	18,531	22,340	3,809
1973	4,524	5,242	718	1995	19,144	23,255	4,111
1974	4,986	5,720	734	1996	19,846	24,270	4,424
1975	5,475	6,155	680	1997	20,739	25,412	4,673
1976	5,974	6,756	782	1998	21,930	26,893	4,963
1977	6,586	7,421	835	1999	22,540	27,880	5,340
1978	7,387	8,291	904	2000	24,046	29,770	5,724
1979	8,485	9,230	745	2001	25,071	30,472	5,401

Source: Bureau of Economic Analysis

**Table 6. State Median Household Income as Percent of United States Fifty State Ranking,  
Three Year Average Median, 1999-2001**

<b>Rank</b>	<b>State</b>	<b>1999-2001 Three Year Average State Median Household Income</b>	<b>1999-2001 Three Year Average State Median Household Income as a Percent of United States</b>
1	Alaska	\$55,426	129.28%
2	Maryland	55,013	128.32%
3	Connecticut	52,887	123.36%
4	Minnesota	52,804	123.16%
5	New Jersey	52,137	121.61%
6	New Hampshire	50,866	118.64%
7	Delaware	50,301	117.33%
8	Colorado	50,053	116.75%
9	Hawaii	49,232	114.83%
10	Virginia	49,085	114.49%
11	Massachusetts	49,018	114.33%
12	Utah	48,378	112.84%
13	Illinois	47,578	110.97%
14	California	47,243	110.19%
15	Michigan	46,929	109.46%
16	Wisconsin	46,734	109.01%
17	Nevada	45,493	106.11%
18	Washington	44,835	104.58%
19	Rhode Island	44,825	104.55%
20	Missouri	43,884	102.36%
21	Oregon	42,701	99.60%
22	Ohio	42,631	99.44%
23	Nebraska	42,518	99.17%
24	Georgia	42,508	99.15%
25	Pennsylvania	42,320	98.71%
26	Iowa	42,255	98.56%
27	New York	42,157	98.33%
28	Indiana	41,921	97.78%
29	Vermont	41,888	97.70%
30	Kansas	41,097	95.86%
31	Arizona	40,965	95.55%
32	Texas	40,547	94.57%
33	Wyoming	40,007	93.32%
34	North Carolina	39,040	91.06%
35	Maine	38,733	90.34%
36	South Dakota	38,407	89.58%
37	South Carolina	38,362	89.48%
38	Idaho	38,310	89.36%
39	Florida	38,141	88.96%
40	Kentucky	37,184	86.73%
41	Alabama	36,693	85.59%
42	Tennessee	36,542	85.23%
43	North Dakota	35,830	83.57%
44	New Mexico	34,599	80.70%
45	Oklahoma	34,554	80.60%
46	Mississippi	33,305	77.68%
47	Louisiana	33,194	77.42%
48	Montana	32,929	76.81%
49	Arkansas	31,798	74.17%
50	West Virginia	30,342	70.77%
	United States	\$42,873	

Source: United States Census Bureau

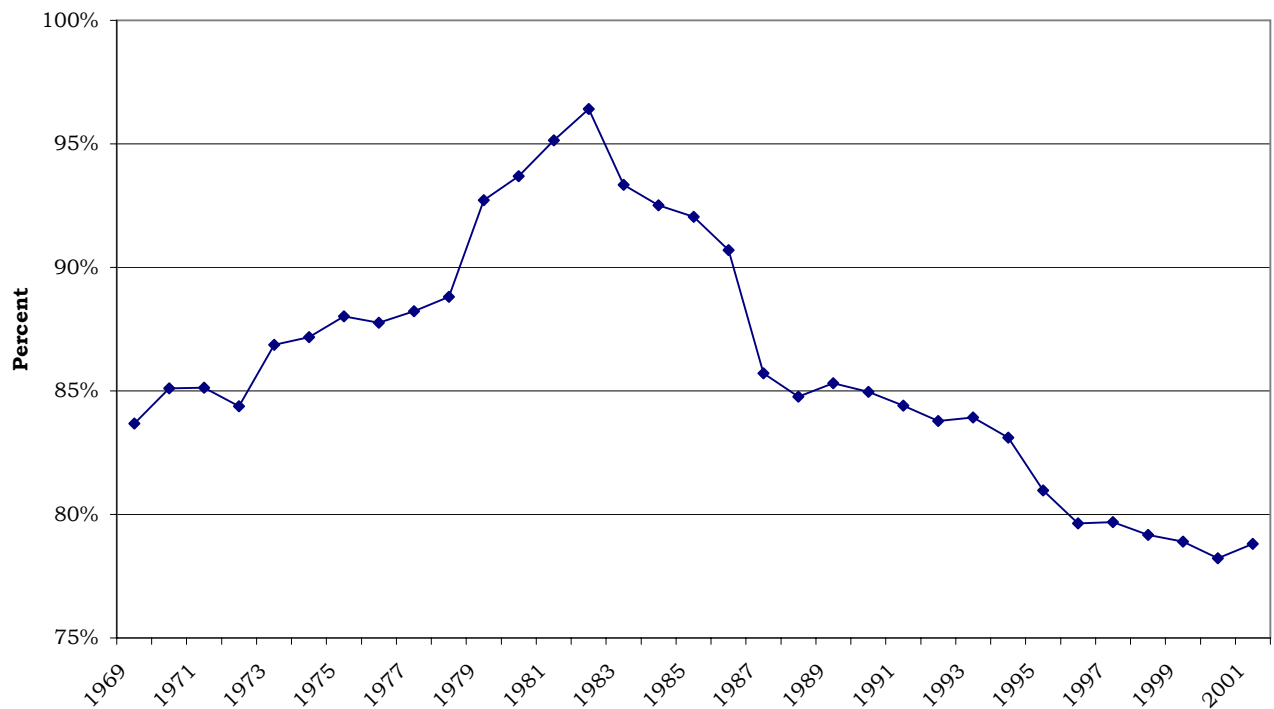


**Table 7. State Average Earnings Per Job as a Percent of United States Fifty State Rankings, 1991 and 2001**

Rank	State	1991 State Average Earnings Per Job	1991 State Average Earnings Per Job as a Percent of United States	Rank	States	2001 State Average Earnings Per Job	2001 State Average Earnings Per Job as a Percent of United States
1	New York	\$32,629	125.50%	1	New York	\$49,072	131.71%
2	Connecticut	31,903	122.71%	2	Connecticut	48,147	129.23%
3	New Jersey	31,729	122.04%	3	New Jersey	46,490	124.78%
4	Alaska	31,519	121.23%	4	Massachusetts	45,586	122.36%
5	Massachusetts	29,705	114.25%	5	California	41,919	112.51%
6	California	29,074	111.82%	6	Illinois	40,522	108.76%
7	Delaware	28,242	108.62%	7	Delaware	39,166	105.12%
8	Illinois	27,758	106.76%	8	Maryland	39,080	104.89%
9	Maryland	27,279	104.92%	9	Washington	38,631	103.69%
10	Michigan	27,104	104.25%	10	Colorado	38,371	102.99%
11	Hawaii	26,952	103.66%	11	Texas	38,261	102.69%
12	Pennsylvania	26,500	101.92%	12	Michigan	38,176	102.46%
13	Washington	25,864	99.48%	13	Virginia	38,064	102.16%
14	Virginia	25,830	99.35%	14	Georgia	37,193	99.83%
15	Nevada	25,506	98.10%	15	Pennsylvania	36,951	99.18%
16	Texas	25,085	96.48%	16	Alaska	36,853	98.92%
17	Georgia	25,007	96.18%	17	Minnesota	35,952	96.50%
18	Ohio	24,991	96.12%	18	New Hampshire	35,693	95.80%
19	Rhode Island	24,735	95.14%	19	Nevada	35,652	95.69%
20	Colorado	24,374	93.75%	20	Rhode Island	35,019	93.99%
21	Minnesota	24,192	93.05%	21	Arizona	33,946	91.11%
22	New Hampshire	24,089	92.65%	22	Ohio	33,931	91.07%
23	Florida	23,681	91.08%	23	Hawaii	33,306	89.39%
24	Louisiana	23,383	89.94%	24	North Carolina	32,965	88.48%
25	Arizona	23,207	89.26%	25	Oregon	32,739	87.87%
26	Indiana	23,198	89.22%	26	Florida	32,629	87.58%
27	Oregon	23,081	88.78%	27	Missouri	32,528	87.31%
28	Alabama	23,019	88.54%	28	Tennessee	32,410	86.99%
29	Missouri	22,978	88.38%	29	Indiana	32,385	86.92%
30	North Carolina	22,721	87.39%	30	Wisconsin	31,880	85.57%
31	Tennessee	22,655	87.14%	31	Alabama	30,921	82.99%
32	Wisconsin	22,417	86.22%	32	Louisiana	30,721	82.46%
33	West Virginia	22,281	85.70%	33	South Carolina	30,504	81.87%
34	South Carolina	22,079	84.92%	34	Kentucky	30,391	81.57%
35	Oklahoma	21,946	84.41%	35	Kansas	30,179	81.00%
36	Maine	21,875	84.14%	36	Utah	30,110	80.82%
37	Kentucky	21,822	83.93%	37	New Mexico	29,694	79.70%
38	New Mexico	21,649	83.27%	38	Nebraska	29,560	79.34%
39	Nebraska	21,615	83.13%	39	Vermont	29,451	79.05%
40	Wyoming	21,604	83.09%	40	Oklahoma	29,362	78.81%
41	Utah	21,532	82.82%	41	West Virginia	28,781	77.25%
42	Kansas	21,381	82.24%	42	Maine	28,748	77.16%
43	Vermont	21,155	81.37%	43	Wyoming	28,667	76.94%
44	Idaho	20,888	80.34%	44	Idaho	28,527	76.57%
45	Iowa	20,252	77.89%	45	Iowa	28,479	76.44%
46	Arkansas	20,094	77.29%	46	Arkansas	27,674	74.28%
47	Mississippi	19,614	75.44%	47	Mississippi	27,172	72.93%
48	Montana	19,433	74.75%	48	South Dakota	26,266	70.50%
49	South Dakota	19,268	74.11%	49	North Dakota	25,256	67.79%
50	North Dakota	18,338	70.53%	50	Montana	24,819	66.62%
	United States	\$26,000			United States	\$37,257	

Source: Bureau of Economic Analysis

**Figure 4. Oklahoma Average Earnings Per Job as a Percent of United States, 1969-2001**



**Table 8. Oklahoma Average Earnings Per Job as a Percent of United States, 1969-2001**

Year	Oklahoma Average Earnings Per Job	United States Average Earnings Per Job	Oklahoma as a Percent of United States	Year	Oklahoma Average Earnings Per Job	United States Average Earnings Per Job	Oklahoma as a Percent of United States
1969	\$5,763	\$6,887	83.68%	1986	\$19,117	\$21,079	90.69%
1970	6,214	7,301	85.10%	1987	18,908	22,059	85.72%
1971	6,618	7,774	85.12%	1988	19,607	23,131	84.76%
1972	7,029	8,330	84.38%	1989	20,530	24,064	85.31%
1973	7,776	8,951	86.87%	1990	21,378	25,163	84.96%
1974	8,322	9,547	87.17%	1991	21,946	26,000	84.41%
1975	9,059	10,293	88.01%	1992	23,180	27,665	83.79%
1976	9,787	11,153	87.76%	1993	23,757	28,307	83.93%
1977	10,590	12,004	88.23%	1994	24,049	28,937	83.11%
1978	11,552	13,009	88.81%	1995	23,918	29,540	80.97%
1979	13,036	14,059	92.72%	1996	24,284	30,493	79.64%
1980	14,189	15,144	93.70%	1997	25,189	31,610	79.69%
1981	15,650	16,449	95.14%	1998	26,188	33,077	79.17%
1982	16,701	17,322	96.42%	1999	27,308	34,611	78.90%
1983	16,942	18,151	93.34%	2000	28,474	36,398	78.23%
1984	17,948	19,400	92.52%	2001	29,362	37,257	78.81%
1985	18,692	20,307	92.05%				

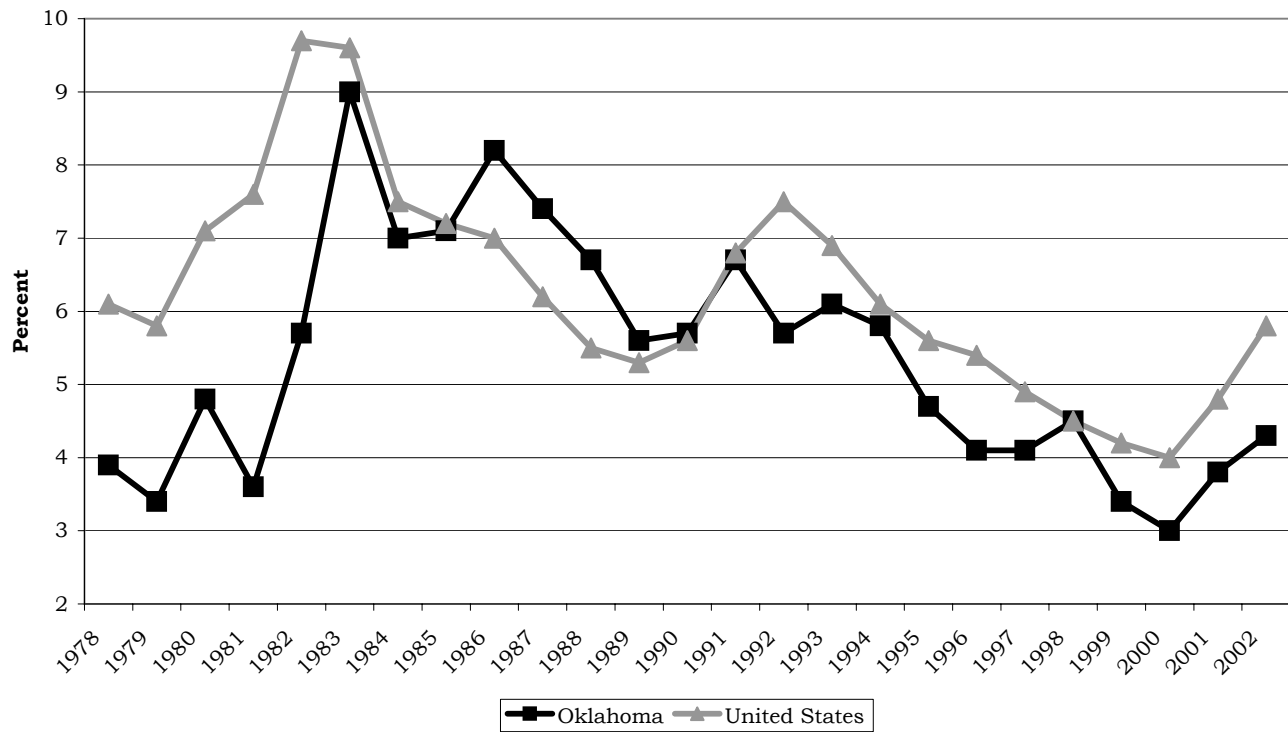
Source: Bureau of Economic Analysis

**Table 9. Unemployment Rate Fifty State Rankings, 2001 and 2002**

<b>Rank</b>	<b>State</b>	<b>2001 Unemployment Rate</b>	<b>Rank</b>	<b>State</b>	<b>2002 Unemployment Rate</b>
1	North Dakota	2.8%	1	South Dakota	3.0%
2	Nebraska	3.1%	2	North Dakota	3.3%
3	Connecticut	3.3%	3	Nebraska	3.5%
3	Iowa	3.3%	4	Iowa	3.7%
3	South Dakota	3.3%	5	Connecticut	3.9%
6	Delaware	3.5%	5	Delaware	3.9%
6	New Hampshire	3.5%	5	Vermont	3.9%
6	Virginia	3.5%	8	Wyoming	4.0%
9	Vermont	3.6%	9	Maine	4.1%
10	Colorado	3.7%	9	Virginia	4.1%
10	Massachusetts	3.7%	11	Minnesota	4.2%
10	Minnesota	3.7%	12	Hawaii	4.3%
13	Oklahoma	3.8%	12	Montana	4.3%
14	Wyoming	3.9%	12	Oklahoma	4.3%
15	Georgia	4.0%	15	Maryland	4.4%
15	Maine	4.0%	15	New Hampshire	4.4%
17	Maryland	4.1%	17	Kansas	4.5%
18	New Jersey	4.2%	18	Georgia	4.6%
19	Kansas	4.3%	19	Rhode Island	4.7%
19	Ohio	4.3%	20	Massachusetts	4.8%
21	Indiana	4.4%	21	Tennessee	4.9%
21	Utah	4.4%	22	Indiana	5.0%
23	Tennessee	4.5%	22	Missouri	5.0%
24	Hawaii	4.6%	24	Arkansas	5.1%
24	Montana	4.6%	24	Wisconsin	5.1%
24	Wisconsin	4.6%	26	Utah	5.2%
27	Arizona	4.7%	27	Colorado	5.3%
27	Missouri	4.7%	27	Kentucky	5.3%
27	Pennsylvania	4.7%	29	Florida	5.4%
27	Rhode Island	4.7%	29	Idaho	5.4%
31	Florida	4.8%	29	Nevada	5.4%
31	New Mexico	4.8%	29	New Jersey	5.4%
33	New York	4.9%	33	Pennsylvania	5.5%
33	Texas	4.9%	34	Ohio	5.6%
33	West Virginia	4.9%	35	Alabama	5.7%
36	Idaho	5.0%	35	South Carolina	5.7%
37	Arkansas	5.1%	37	Arizona	5.8%
38	Alabama	5.3%	38	West Virginia	5.9%
38	California	5.3%	39	Louisiana	6.0%
38	Michigan	5.3%	39	New Mexico	6.0%
38	Nevada	5.3%	39	New York	6.0%
42	Illinois	5.4%	42	Michigan	6.1%
42	South Carolina	5.4%	42	Texas	6.1%
44	Kentucky	5.5%	44	Illinois	6.3%
44	Mississippi	5.5%	45	California	6.4%
44	North Carolina	5.5%	46	North Carolina	6.5%
47	Louisiana	6.0%	47	Alaska	6.6%
48	Alaska	6.3%	47	Mississippi	6.6%
48	Oregon	6.3%	49	Washington	7.0%
50	Washington	6.4%	50	Oregon	7.4%
	United States	4.8%		United States	5.8%

Source: Bureau of Labor Statistics and Office of State Finance Calculations for 2002 Unemployment Rate based on average of monthly unemployment rates for states.

**Figure 5. Oklahoma and United States Unemployment Rates, 1978-2002**



**Table 10. Oklahoma and United States Unemployment Rates, 1978-2002**

Year	Oklahoma Unemployment Rate	United States Unemployment Rate	Year	Oklahoma Unemployment Rate	United States Unemployment Rate
1978	3.9%	6.1%	1991	6.7%	6.8%
1979	3.4%	5.8%	1992	5.7%	7.5%
1980	4.8%	7.1%	1993	6.1%	6.9%
1981	3.6%	7.6%	1994	5.8%	6.1%
1982	5.7%	9.7%	1995	4.7%	5.6%
1983	9.0%	9.6%	1996	4.1%	5.4%
1984	7.0%	7.5%	1997	4.1%	4.9%
1985	7.1%	7.2%	1998	4.5%	4.5%
1986	8.2%	7.0%	1999	3.4%	4.2%
1987	7.4%	6.2%	2000	3.0%	4.0%
1988	6.7%	5.5%	2001	3.8%	4.8%
1989	5.6%	5.3%	2002	4.3%	5.8%
1990	5.7%	5.6%			

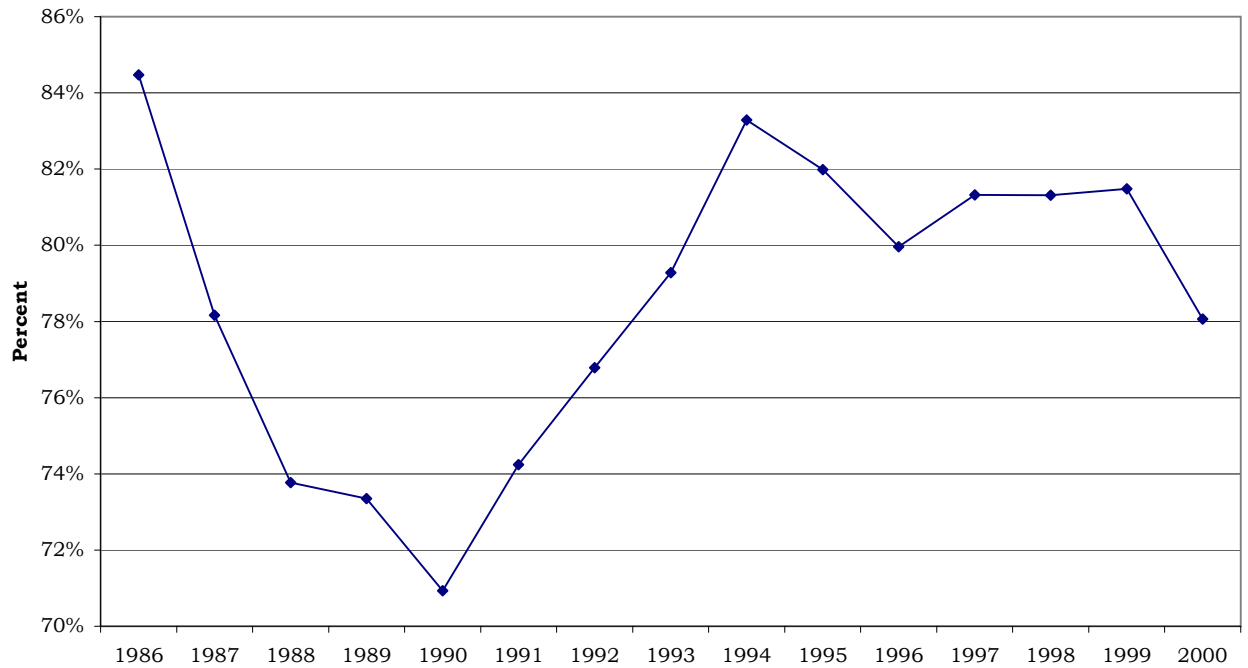
Source: Bureau of Labor Statistics and Office of State Finance Calculations for 2002 Unemployment Rate based on average of monthly unemployment rates for states.

**Table 11. Elementary and Secondary Education Expenditures Per Pupil Fifty State Rankings, FY-2000**

<b>Rank</b>	<b>State</b>	<b>FY-2000 Elementary and Secondary Education Expenditures Per Pupil (\$000's)</b>	<b>Fall 1999 Enrollment</b>	<b>Elementary and Secondary Education Expenditures per Pupil in Fall Enrollment</b>
1	New Jersey	\$13,327,645	1,289,256	\$10,337
2	New York	28,433,240	2,887,776	9,846
3	Connecticut	5,402,868	553,993	9,753
4	Rhode Island	1,393,143	156,454	8,904
5	Alaska	1,183,499	134,391	8,806
6	Massachusetts	8,511,065	971,425	8,761
7	Vermont	870,198	104,559	8,323
8	Delaware	937,630	112,836	8,310
9	Michigan	13,994,294	1,725,617	8,110
10	Wisconsin	6,852,178	877,753	7,806
11	Pennsylvania	14,120,112	1,816,716	7,772
12	Maryland	6,545,135	846,582	7,731
13	Maine	1,604,438	209,253	7,667
14	Wyoming	683,918	92,105	7,425
15	Indiana	7,110,930	988,702	7,192
16	Minnesota	6,140,442	854,034	7,190
17	West Virginia	2,086,937	291,811	7,152
18	Oregon	3,896,287	545,033	7,149
19	Illinois	14,462,773	2,027,600	7,133
20	Ohio	12,974,575	1,836,554	7,065
21	New Hampshire	1,418,503	206,783	6,860
22	Virginia	7,757,598	1,133,994	6,841
23	Nebraska	1,926,500	288,261	6,683
24	Iowa	3,264,336	497,301	6,564
25	Hawaii	1,213,695	185,860	6,530
26	Georgia	9,158,624	1,422,762	6,437
27	Washington	6,399,883	1,003,714	6,376
28	California	38,129,479	6,038,589	6,314
29	Montana	994,770	157,556	6,314
30	Kansas	2,971,814	472,188	6,294
31	Texas	25,098,703	3,991,783	6,288
32	Colorado	4,400,888	708,109	6,215
33	Missouri	5,655,531	914,110	6,187
34	South Carolina	4,087,355	666,780	6,130
35	North Carolina	7,713,293	1,275,925	6,045
36	Kentucky	3,837,794	648,180	5,921
37	Florida	13,885,988	2,381,396	5,831
38	New Mexico	1,890,274	324,495	5,825
39	Louisiana	4,391,214	756,579	5,804
40	Nevada	1,875,467	325,610	5,760
41	North Dakota	638,946	112,751	5,667
42	Alabama	4,176,082	740,732	5,638
43	South Dakota	737,998	131,037	5,632
44	Oklahoma	3,382,581	627,032	5,395
45	Tennessee	4,931,734	916,202	5,383
46	Idaho	1,302,817	245,331	5,310
47	Arkansas	2,380,331	451,034	5,277
48	Mississippi	2,510,376	500,716	5,014
49	Arizona	4,262,182	852,612	4,999
50	Utah	2,102,655	480,255	4,378
	United States	\$323,808,909	46,857,321	\$6,911

Source: National Center for Education Statistics and Bureau of Economic Analysis

**Figure 6. Oklahoma Elementary and Secondary Education Expenditures Per Pupil as a Percent of United States, FY-86 to FY-2000**



**Table 12. Oklahoma Elementary and Secondary Education Expenditures Per Pupil as a Percent of United States, FY-86 to FY-2000**

Fiscal Year	Oklahoma Elementary and Secondary Education Expenditures Per Pupil	United States Elementary and Secondary Education Expenditures Per Pupil	Oklahoma as a Percent of United States	Fiscal Year	Oklahoma Elementary and Secondary Education Expenditures Per Pupil	United States Elementary and Secondary Education Expenditures Per Pupil	Oklahoma as a Percent of United States
1986	\$2,939	\$3,479	84.47%	1994	\$4,437	\$5,327	83.29%
1987	2,878	3,682	78.16%	1995	4,533	5,529	81.99%
1988	2,897	3,927	73.77%	1996	4,549	5,689	79.96%
1989	3,159	4,307	73.35%	1997	4,817	5,923	81.33%
1990	3,293	4,643	70.93%	1998	5,033	6,189	81.31%
1991	3,639	4,902	74.24%	1999	5,303	6,508	81.48%
1992	3,857	5,023	76.78%	2000	5,395	6,911	78.06%
1993	4,090	5,160	79.28%				

Source: National Center for Education Statistics and Bureau of Economic Analysis